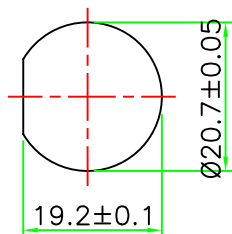
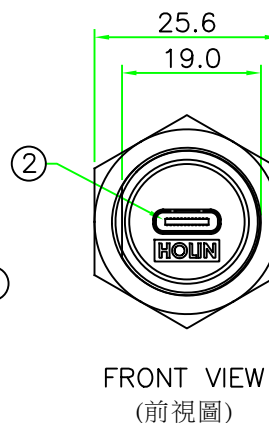
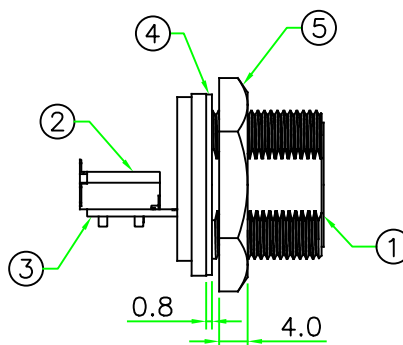
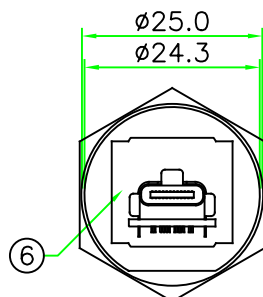
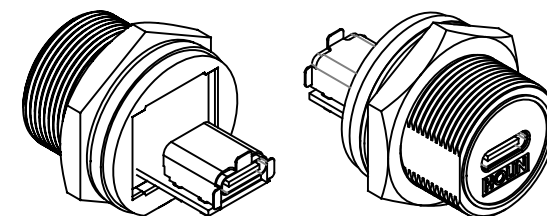
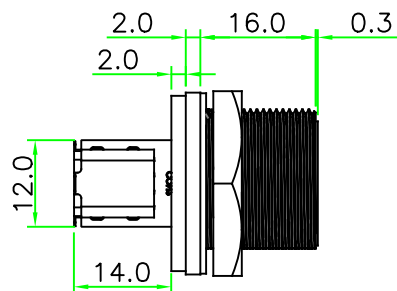


REV.	DESCRIPTION	DATE
A	ISSUE	Jul/05/2023

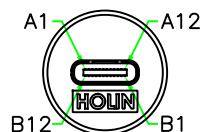
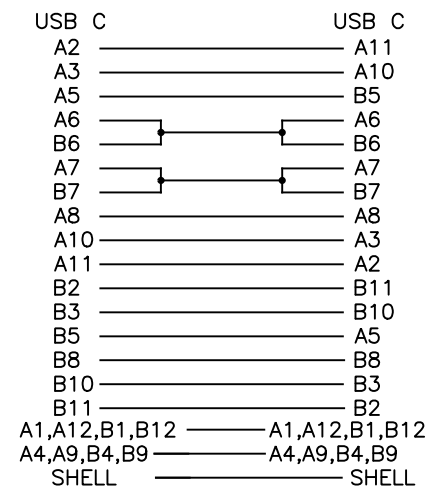


RECOMMEND
PANEL CUT OUT

RoHS



WIRING DIAGRAM



PIN ASSIGNMENT
FRONT VIEW
(前視圖)

No.	PART NAME	DESCRIPTION	COLOR	Q'TY	REMARKS
6	GLUE	Epoxy.	BLACK	1	
5	HEX NUT	Nylon+GF.	BLACK	1	
4	GASKET	EPDM.	BLACK	1	
3	PCB	FR4 . 4 Layer PCB, 1.0mm Thickness.		1	
2	CONNECTOR	USB Type C Female R/A PCB Connector.		2	
1	BODY	USB Type C Female Connector Body. Nylon+GF.	BLACK	1	

HOLIN® HTP ASIA TECHNOLOGY CO., LTD.
禾凌科技股份有限公司

	UNIT: mm	TITLE: USB Type C Female C Size Screw Type Circular Flange Panel Connector With USB Type C Female
	SCALE 1:1	P/N: USBCC-P3CSJ
UNLESS OTHERWISE SPECIFIED TOLERANCES: xx. ± 0.5 .x ± 0.5 .xx ± 0.25 .xxx ± 0.1 ANGLE ± 1°		
REV. A	SHEET 1/1	DWG.NO: USBCC-P3CSJ

DR. James
CH. Eric
AP.