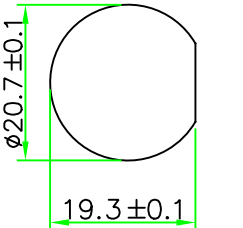
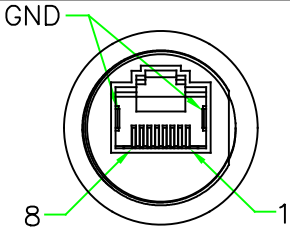
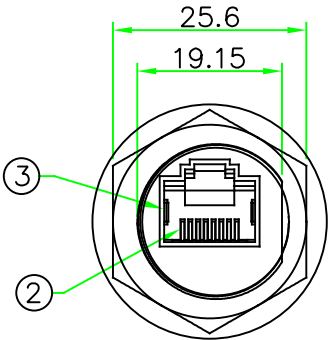


RoHS



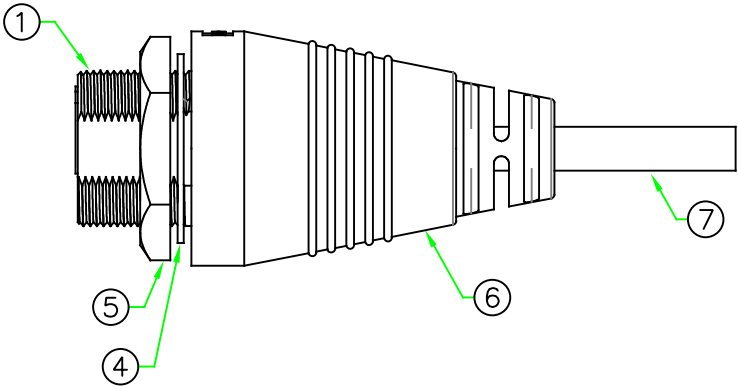
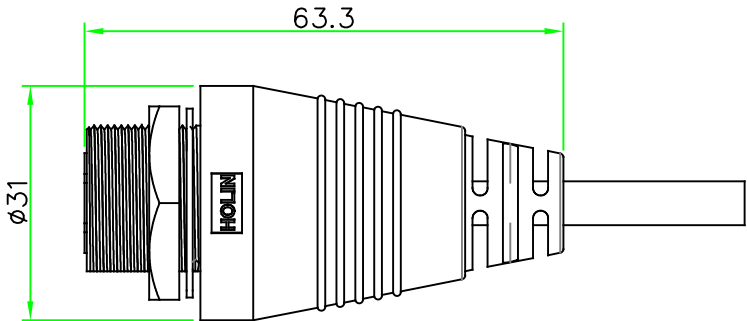
RECOMMENDED
PANEL CUT OUT



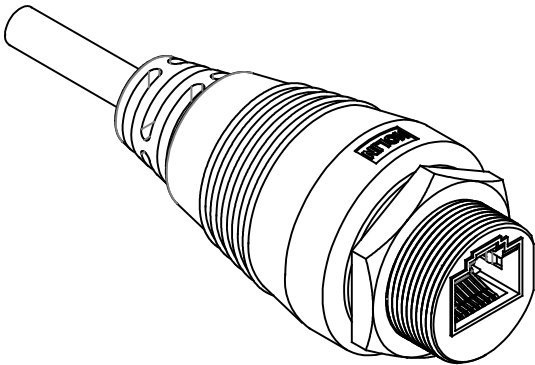
PIN ASSIGNMENT
FRONT VIEW

(前視圖)

※ Cable specification and length can be customized.




REV.	DESCRIPTION	DATE
A	ISSUE	Feb/24/2025



Wiring Diagram

RJ45C-P3CSM	
1	Orange/White (橙/白)
2	Orange (橙)
3	Green/White (綠/白)
6	Green (綠)
4	Blue (藍)
5	Blue/White (藍/白)
7	Brown/White (棕/白)
8	Brown (棕)
SHELL	Drain (地線)

7	CABLE	CAT. 5E 24AWG x 4P+D, FTP.	BLACK	1	
6	OVERMOLD	PVC.	BLACK	1	29-135-N10
5	HEX NUT	Nylon+GF.	BLACK	1	
4	GASKET	EPDM.	BLACK	1	
3	GROUND	Ground Contact. SUS304.		2	
2	CONTACT	RJ45 Pin Contact. Phos. Bronze 50u" Gold plating.		8	
1	CONNECTOR	RJ45 Jack Connector Lock Type Body. Nylon+GF.	BLACK	1	
No.	PART NAME	DESCRIPTION	COLOR	Q'TY	REMARKS

HOLIN® HTP ASIA TECHNOLOGY CO., LTD.			
禾凌科技股份有限公司			
	UNIT: mm	TITLE : RJ45 Jack C Size Screw Type Male Connector Female Pin Molded Cable	
	SCALE 1:1		
UNLESS OTHERWISE SPECIFIED TOLERANCES: XX, ±1.0 .X ±1.0 .XX ±0.5 .XXX ±0.25 ANGLE ± 1°		P/N: RJ45C-P3CSM	DR. SIBYL
			CH. JAMES
REV. A	SHEET 1/1	DWG.NO: RJ45C-P3CSM	AP.