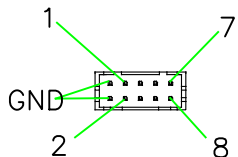
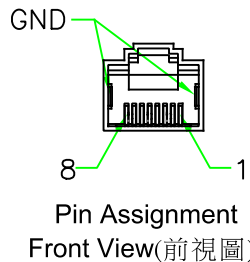


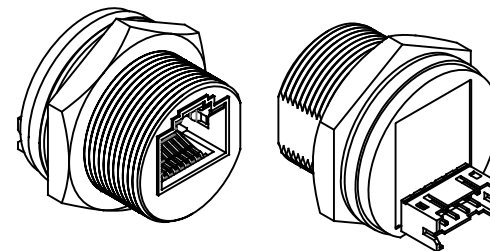
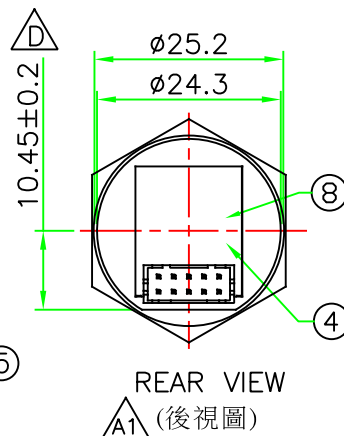
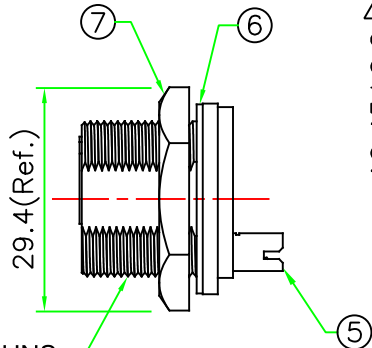
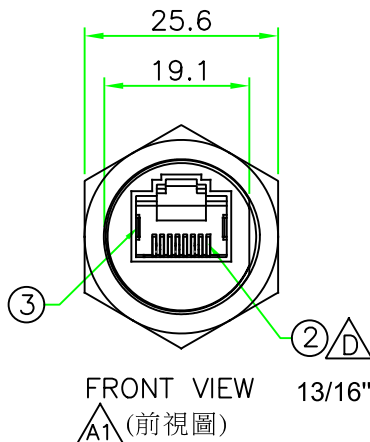
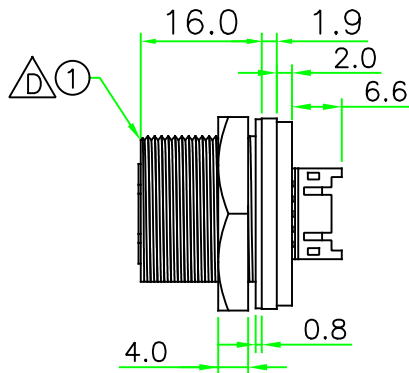
RECOMMENDED  
PANEL CUT OUT

RoHS



Pin Assignment  
Rear View(後視圖)


Note: Hex nut & gasket are not assembled separately packaged  
(Hex nut & gasket不組裝另外包裝)



- NOTES:
1. Current Rating: 1A
  2. Voltage Rating: 150 VAC Max.
  3. Connector Temperature Range: -25°C to 85°C
  4. Contact Resistance: ≤30mΩ
  5. Insulation Resistance: ≥100MΩ
  6. Dielectric Withstanding Voltage:  
1KVrms at 60Hz, 1 minute between adjacent contacts.  
1.5KVrms at 60Hz, 1 minute between shield and contacts.
  7. Panel Thickness Max. 4.0

OLD P/N: RJ45C-PJSWSC  
(原型号)

No.	PART NAME	DESCRIPTION	COLOR	Q'TY	REMARKS
7	HEX NUT	NYLON+GF.	BLACK	1	
6	GASKET	EPDM.	BLACK	1	
5	CONNECTOR	Pitch 2.0mm 5 PIN x 2 ROW, Straight wafer.	NATURE	1	
4	PCB	FR4. 4 Layer, 1.0mm Thickness.		1	
3	GROUND	Ground Contact. SUS304.		2	
2	CONTACT	RJ45 PIN Contact. Phos. Bronze 50u" Gold Plating.		8	
1	CONNECTOR	RJ45 JACK Connector Insert. NYLON+GF.	BLACK	1	

HOLIN® HTP ASIA TECHNOLOGY CO., LTD. 禾凌科技股份有限公司			
	UNIT: mm	TITLE RJ45 Jack C Size Panel Connector Screw Type Round Flange 10P Straight Wafer	
SCALE	1:1		
UNLESS OTHERWISE SPECIFIED TOLERANCES: XX, ± 0.5 .X ± 0.5 .XX ± 0.25 .XXX± 0.1 ANGLE ± 1°		P/N: RJ45C-P3C03	DR. JAMES
			CH. ERIC
		REV. D	SHEET 1/1