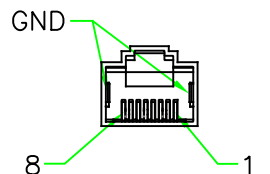
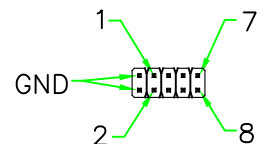


RECOMMENDED
PANEL CUT OUT

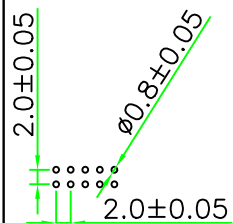
RoHS



PIN ASSIGNMENT
FRONT VIEW(前視圖)



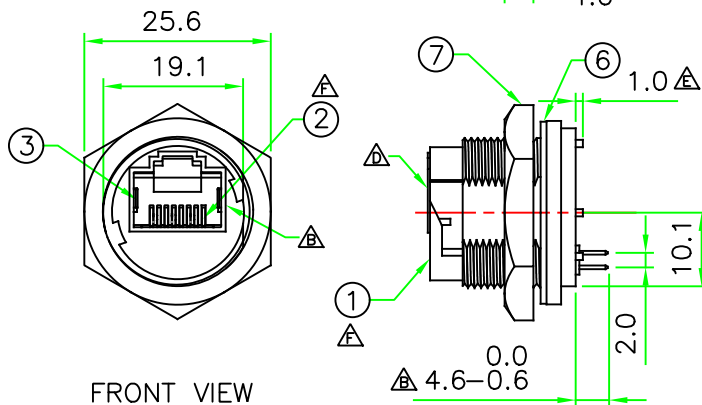
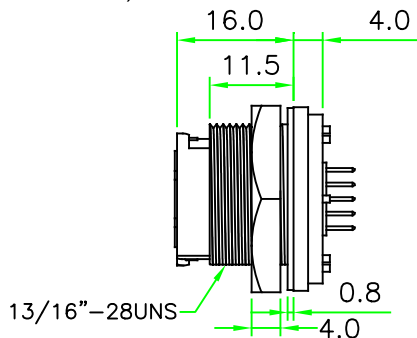
PIN ASSIGNMENT
REAR VIEW(後視圖)



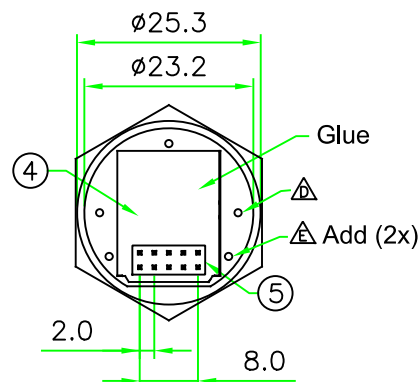
PCB Layout

Note: Hex nut & gasket are not assembled separately packaged

⚠ (Hex nut & gasket不組裝另外包裝)



FRONT VIEW
(前視圖)



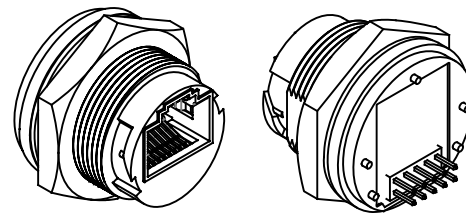
REAR VIEW
(後視圖)



Glue

⚠ Add (2x)

- NOTES:
1. Current Rating: 1A
 2. Voltage Rating: 150 VAC Max.
 3. Connector Temperature Range: -25°C to 85°C
 4. Contact Resistance: ≤30mΩ
 5. Insulation Resistance: ≥100MΩ
 6. Dielectric Withstanding Voltage:
1KVrms at 60Hz, 1 minute between adjacent contacts.
1.5KVrms at 60Hz, 1 minute between shield and contacts.
 7. Panel Thickness Max. 4.0



7	HEX NUT	Nylon+GF.	BLACK	1	
6	GASKET	EPDM.	BLACK	1	
5	CONNECTOR	Pin Header, Pitch 2.0mm, Straight Angle 5P*2Row.	BLACK	1	
4	PCB	FR4. 4 Layers, 1.0mm Thickness.		1	
3	GROUND	Ground Contact. SUS304.		2	
2	CONTACT	RJ45 Pin Contact. Phos. Bronze 50u" Gold Plating.		8	
1	CONNECTOR	RJ45 Jack Connector Body. Nylon+GF. ⚠	BLACK	1	
No.	PART NAME	DESCRIPTION	COLOR	Q'TY	REMARKS

HOLIN® HTP ASIA TECHNOLOGY CO., LTD. 禾凌科技股份有限公司					
UNIT: mm		TITLE RJ45 Jack C Size Panel Connector Lock Type Round Flange 10 Pin Straight Angel Pin Header			
SCALE 1:1		P/N: RJ45C-L3C01		DR. James	
UNLESS OTHERWISE SPECIFIED TOLERANCES: .XX ± .05 .X ± .05 .XX ± .05 .XXX ± .01 ANGLE ± 1°		DWG.NO: RJ45C-L3C01		CH. Eric	
REV. F		SHEET 1/1		AP.	