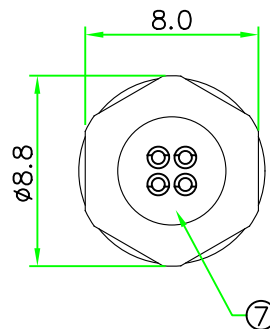
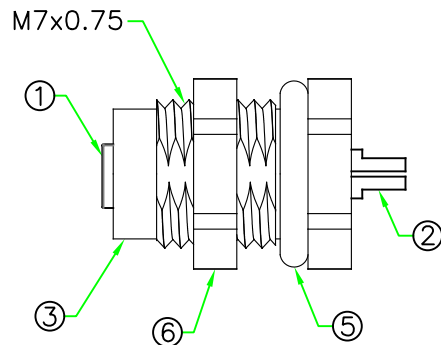
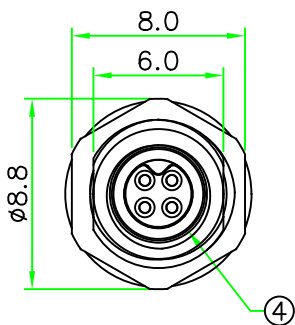
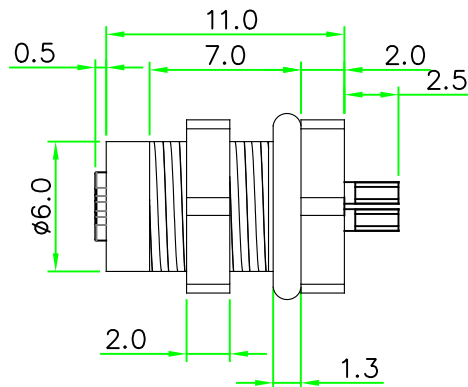
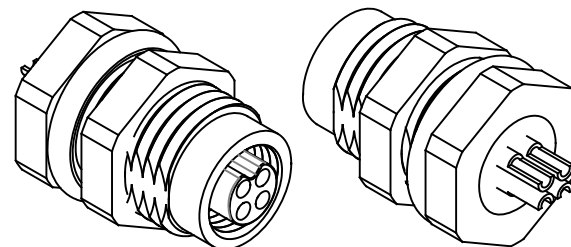


RECOMMENDED  
PANEL CUT OUT

RoHS



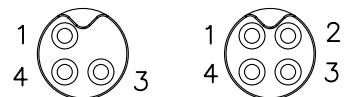
REV.	DESCRIPTION	DATE
A	ISSUE	Feb/07/2025



NOTES:

- ELECTRICAL CHARACTERISTICS:  
CURRENT RATING: 1A  
VOLTAGE RATING: 60V d.c. or a.c.  
TEMPERATURE RANGE: -25°C TO +85°C  
DIELECTRIC WITHSTANDING VOLTAGE:  
500V AC FOR ONE MINUTE
- PANEL THICKNESS Max. 2.5mm.
- HOW TO ORDER: A05I-M2xxHSR

03 - 3 PINS  
04 - 4 PINS



A05I-M203HPR    A05I-M204HPR

PIN ASSIGNMENT  
FRONT VIEW

(前視圖)

No.	PART NAME	DESCRIPTION	COLOR	Q'TY	REMARKS
7	GLUE	Epoxy.	BLACK	1	
6	HEX NUT	BRASS, Nickel Plated.		1	
5	O-RING	SILICON.	BLACK	1	
4	O-RING	VITON.	BLACK	1	
3	HOUSING	BRASS, Nickle Plated.		1	
2	CONTACT	BRASS, 6 u" Gold Plated. Female Contact.		N	
1	CONNECTOR	M5 A-Coding Female Connector Insert.NYLON+GF.	BLACK	1	

<b>HOLIN®</b> HTP ASIA TECHNOLOGY CO., LTD. 禾凌科技股份有限公司	
UNIT: mm SCALE: 3:1 UNLESS OTHERWISE SPECIFIED TOLERANCES: XX ± 0.5 .X ± 0.5 .XX ± 0.25 .XXX ± 0.1 ANGLE ± 1° REV. A SHEET 1/1	TITLE M5 A-Coding Female Panel Connector Rear Mount Hex Flange With Solder Bucket Pin  P/N: A05I-M2xxHSR  DWG.NO: A05I-M2xxHSR
DR. JAMES	CH. ERIC
AP.	