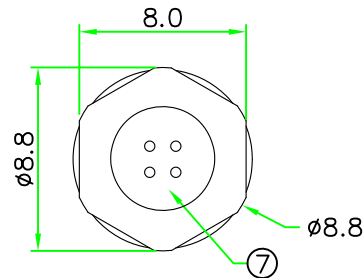
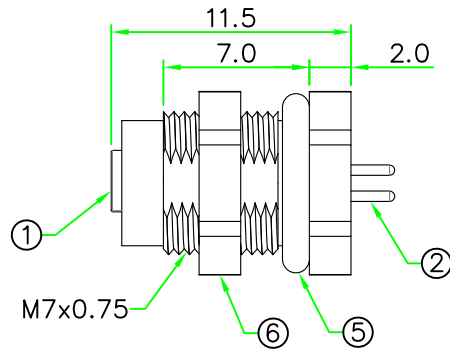
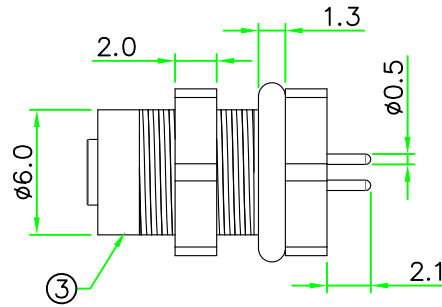
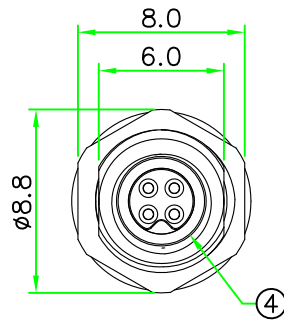


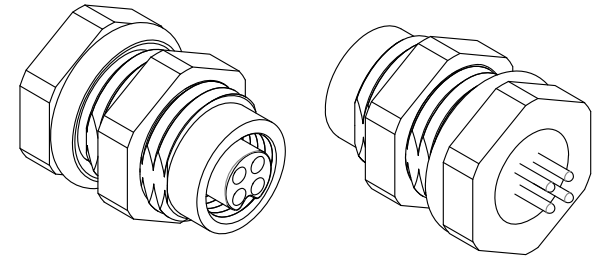
RECOMMENDED
PANEL CUT OUT

RoHS

IP68



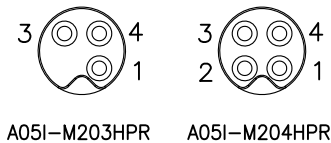
REV.	DESCRIPTION	DATE
A	ISSUE	Jun/05/2019



NOTES:

- ELECTRICAL CHARACTERISTICS:
CURRENT RATING: 1A
TEMPERATURE RANGE: -25°C TO +85°C
DIELECTRIC WITHSTANDING VOLTAGE:
500V AC FOR ONE MINUTE
- Panel Thickness Max. 3.5mm.
- HOW TO ORDER: A05I-M2xxHPR

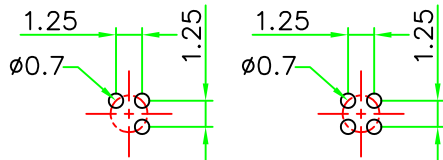
03 - 3 PINS
04 - 4 PINS



A05I-M203HPR A05I-M204HPR

PIN ASSIGNMENT
FRONT VIEW

(前視圖)



A05I-M203HPR A05I-M204HPR

PCB LAYOUT

7	GLUE	EPOXY.	BLACK	1	
6	HEX NUT	BRASS, Nickel Plated.		1	
5	O-RING	SILICON.	BLACK	1	
4	O-RING	VITON.	BLACK	1	
3	HOUSING	BRASS, Nickel Plated.		1	
2	CONTACT	BRASS, 6 u" Gold Plated. Female Contact.		N	
1	CONNECTOR	M5 A-Coding Female Connector Insert.NYLON+GF.	BLACK	1	
No.	PART NAME	DESCRIPTION	COLOR	Q'TY	REMARKS

HOLIN [®] HTP ASIA TECHNOLOGY CO., LTD. 禾凌科技股份有限公司					
	UNIT: mm	TITLE M5 A-Coding Female Panel Connector Rear Mount Hex Flange With PCB Mount Pin			
SCALE	3:1	P/N: A05I-M2xxHPR		DR. James	
UNLESS OTHERWISE SPECIFIED TOLERANCES: .x ± 0.5 .xx ± 0.25 .xxx ± 0.1 ANGLE ± 1°		DWG.NO: A05I-M2xxHPR		CH. ERIC	
REV. A	SHEET 1/1			AP.	