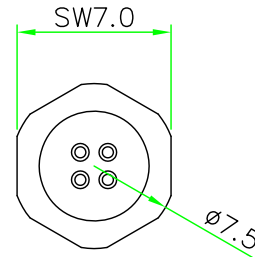
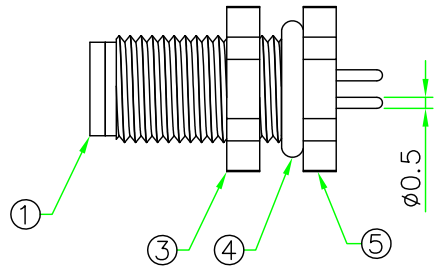
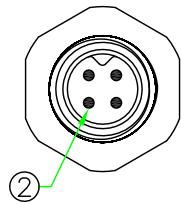
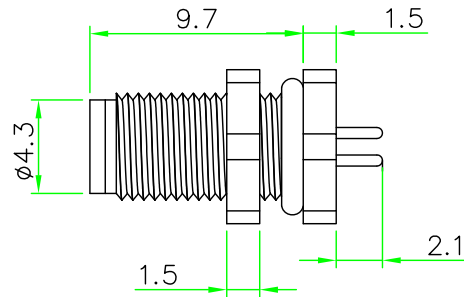
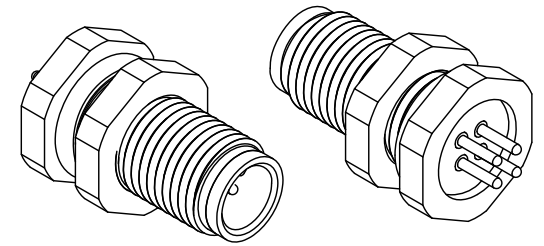


RECOMMENDED
PANEL CUT OUT

RoHS
IP66~68



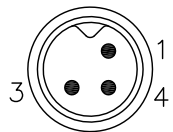
REV.	DESCRIPTION	DATE
A	ISSUE	Dec/16/2014



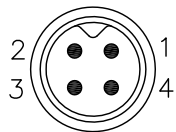
NOTES:

- ELECTRICAL CHARACTERISTICS:
CURRENT RATING: 1A
TEMPERATURE RANGE: -25°C TO +85°C
DIELECTRIC WITHSTANDING VOLTAGE:
500V AC FOR ONE MINUTE
- Panel Thickness Max. 3.0mm.
- HOW TO ORDER: A05I-M1XXHPR

03 - 3 PINS
04 - 4 PINS

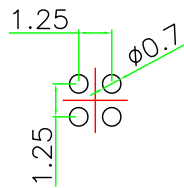


A05I-M103HPR



A05I-M104HPR

PIN ASSIGNMENT FRONT VIEW
(前視圖)



PCB Layout

5	HEX NUT	Brass, Nickel Plated.		1	
4	O-RING	Silicon.	BLACK	1	
3	HOUSING	BRASS, Nickle Plated.		1	
2	CONTACT	BRASS, 6 u" Gold Plated. Male Contact.		N	
1	CONNECTOR	M5 A-Coding Male Connector Insert.NYLON+GF.	BLACK	1	
No.	PART NAME	DESCRIPTION	COLOR	Q'TY	REMARKS

HOLIN® HTP ASIA TECHNOLOGY CO., LTD. 禾凌科技股份有限公司					
		UNIT: mm	TITLE	M5 A-Coding Male Panel Connector Rear Mount Hex Flange With PCB Pin	
SCALE	3:1		P/N:	A05I-M1xxHPR	DR. Patty
UNLESS OTHERWISE SPECIFIED TOLERANCES:					CH. ERIC
.x ± 0.25 .xx ± 0.1					
.xxx ± 0.05 ANGLE ± 1°					
REV.	A	SHEET	DWG.NO:	A05I-M1xxHPR	AP.
		1/1			