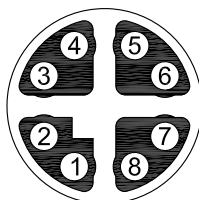
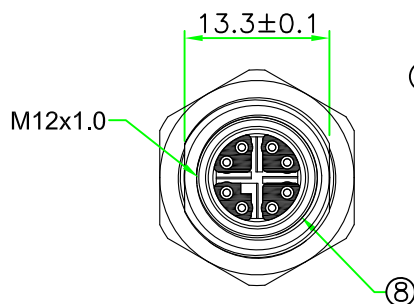


Recommended
Panel Cut Out

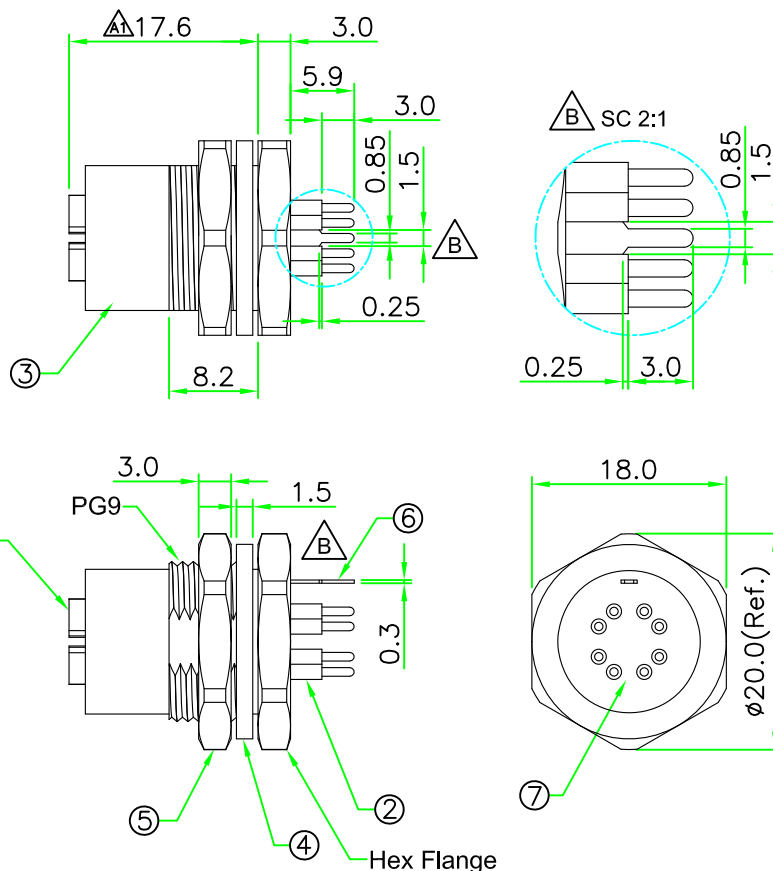
RoHS

IP66~68

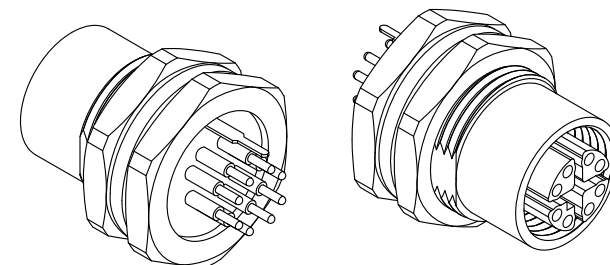


PIN ASSIGNMENT
FRONT VIEW

(前視圖)



REV.	DESCRIPTION	DATE
A	ISSUE	Oct/01/2014
A1	Correct dimensions	Jul/06/2016
B	Change Shielded Pin Design.	Oct/19/2018



NOTES:

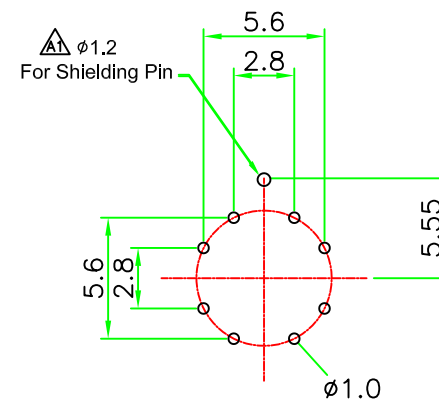
1. ELECTRICAL CHARACTERISTICS:

CURRENT RATING: 0.5A

TEMPERATURE RANGE: -25°C TO +85°C

DIELECTRIC WITHSTANDING VOLTAGE:

500V AC FOR ONE MINUTE



PIN PCB LAYOUT

8	O-RING	Viton.	BLACK	1	
7	GLUE	Epoxy.	BLACK	1	
6	SHIELD PIN	Brass, Nickel Plated.		1	
5	HEX NUT	Brass, Nickel Plated. PG9 Thread.		1	
4	GASKET	Rubber.	BLACK	1	
3	HOUSING	Brass, Nickel Plated.		1	
2	CONTACT	Brass , 6 u" Gold Plated . Female Contact.		8	
1	CONNECTOR	M12 X-Coding Female Connector Insert. Nylon+GF.	BLACK	1	
No.	PART NAME	DESCRIPTION	COLOR	Q'TY	REMARKS

HOLIN® HTP ASIA TECHNOLOGY CO., LTD.
禾凌科技股份有限公司

UNIT: mm	TITLE : M12 X-Coding Female Connector Female Pin Rear Mount Hex Flange PCB Pin with Shield Pin
SCALE 1.5:1	
UNLESS OTHERWISE SPECIFIED TOLERANCES: .X ± 0.5 .XX ± 0.25 .XXX ± 0.1 ANGLE ± 1°	P/N: X12I-S208HPR
REV. B	SHEET 1/1
DWG.NO: X12I-S208HPR	DR. SIBYL CH. ERIC AP.