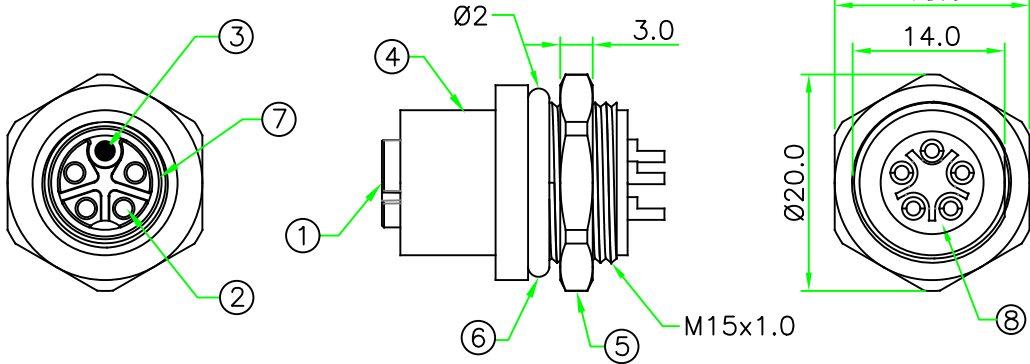
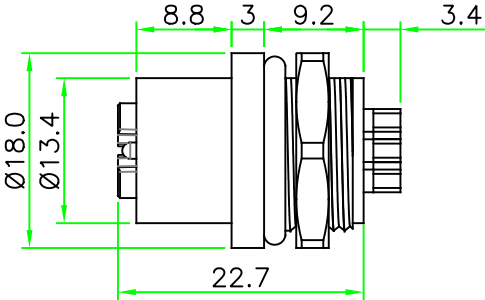
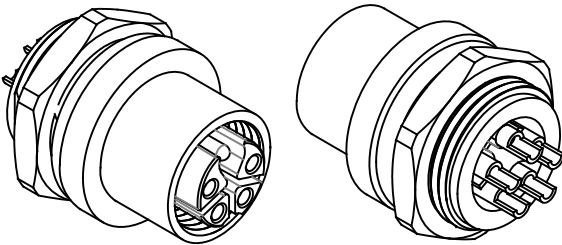


RoHS

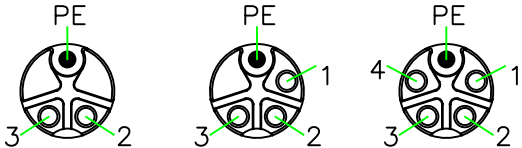


REV.	DESCRIPTION	DATE
A	ISSUE	Aug/04/2024



- NOTES:
- ELECTRICAL CHARACTERISTICS:
CURRENT RATING: 12A
VOLTAGE RATING : 630V
TEMPERATURE RANGE: -25°C TO +85°C
DIELECTRIC WITHSTANDING VOLTAGE:
500V AC FOR ONE MINUTE
 - HOW TO ORDER: K12P-M6xxCSF

- 03 - 3 PINS (2+PE)
04 - 4 PINS (3+PE)
05 - 5 PINS (4+PE)



K12P-M603CSF K12P-M604CSF K12P-M605CSF

Pin Assignment Front View (前視圖)

8	GLUE	Epoxy	BLACK	1		HOLIN® HTP ASIA TECHNOLOGY CO., LTD. 禾凌科技股份有限公司	UNIT: mm SCALE 1.5:1	TITLE: M12 K-Coding Female Panel Connector Front Mount Circular Flange Female Pin + Male Pin With Solder Bucket Pin	P/N: K12P-M6xxCSF	DR. JAMES CH. ERIC
7	O-RING	Viton.	BLACK	1						
6	O-RING	Silicon.	RED	1		UNLESS OTHERWISE SPECIFIED TOLERANCES: XX. ± 0.5 .X ± 0.5 .XX ± 0.25 .XXX ± 0.1 ANGLE ± 1°	REV. A	SHEET 1/1	DWG.NO: K12P-M6xxCSF	AP.
5	HEX NUT	BRASS, Nickel Plated.		1						
4	HOUSING	BRASS, Nickel Plated.		1		REV. A	SHEET 1/1	DWG.NO: K12P-M6xxCSF	AP.	
3	CONTACT	BRASS, 6 u" Gold Plated. Male Contact.		1						
2	CONTACT	BRASS, 6 u" Gold Plated. Female Contact.		N		REV. A	SHEET 1/1	DWG.NO: K12P-M6xxCSF	AP.	
1	CONNECTOR	M12 K-Coding Female Connector Insert. Nylon+GF.	BLACK	1						
No.	PART NAME	DESCRIPTION	COLOR	Q'TY	REMARKS	A	1/1	K12P-M6xxCSF		