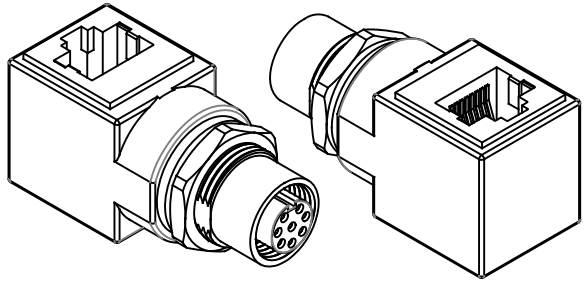
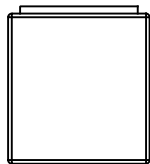
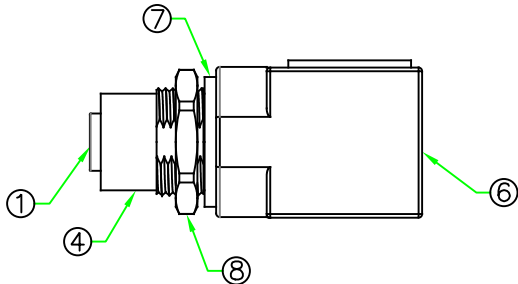
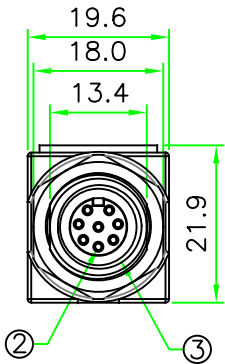
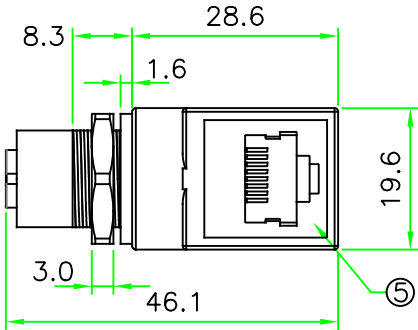
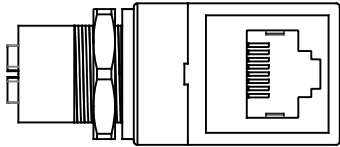


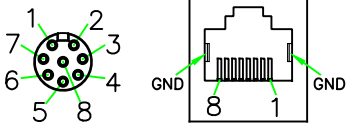
RoHS

REV.	DESCRIPTION	DATE
A	ISSUE	Sep/24/2025

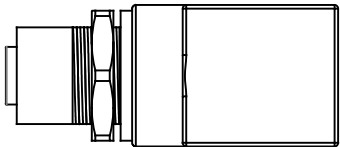



WIRING DIAGRAM

M12A-8F	RJ45 JACK
1	1
2	2
3	3
4	6
5	7
6	8
7	5
8	4
Shell	Shell



PIN ASSIGNMENT FRONT VIEW  
(前視圖)



8	HEX NUT	BRASS. Nickel Plated.		1		HOLIN® HTP ASIA TECHNOLOGY CO., LTD.					
7	GASKET	EPDM.	BLACK	1		禾凌科技股份有限公司					
6	OVERMOLD	PU.	BLACK	1			UNIT: mm	TITLE : M12 A-Coding 8P Female to RJ45 8P8C Jack Adapter			
5	CONNECTOR	RJ45 8P8C JACK.		1		SCALE	1:1				
4	METAL BODY	BRASS. Nickel Plated.		1		UNLESS OTHERWISE SPECIFIED TOLERANCES: XX. ±1.0 .X ±1.0 .XX ±0.5 .XXX ±0.25 ANGLE ± 1°		P/N:	A12RJL-MFF88	DR.	James
3	O-RING	VITON.	BLACK	1						CH.	Eric
2	CONTACT	BRASS. 6u" Gold Plated. Female Pin.		8				REV.	SHEET	DWG.NO:	A12RJL-MFF88
1	CONNECTOR	M12 A-Coding Female 8 Pin Connector Insert.Nylon+GF.	BLACK	1		A	1/1				
No.	PART NAME	DESCRIPTION	COLOR	Q'TY	REMARKS						